

DAYS SPA®

January 2011

dayspamagazine.com \$5.00



Top Honors 13 Standout Spas To Watch in 2011

Page 40

PLUS

Plant-Based Stem Cells—a “Natural” for Skin Care?

New Column! Get Your Economic Forecast for 2011

Spa Chefs Kick It Up a Notch

ESSENTIALS | Products You Need

Essentials is designed to preview products and services of interest to day spa owners and managers. To receive more information about these items, call the phone number or visit the website listed at the end of each description.



Encourage guests to maintain a naturally healthy glow throughout cold, windy months with the formulas contained in Universal Companies' **Summer Tan** line. These products are green- (rather than red-) based for more realistic color, and they deliver immediate and long-lasting results. **800.558.5571, universalcompanies.com**

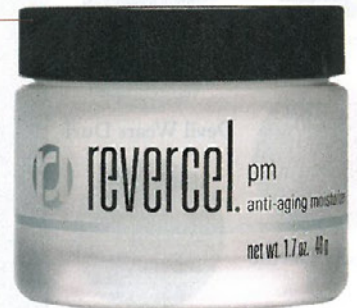
Argan oil lends a hand in Cuccio Natural's **Fragrance-Free Massage Extender Concentrate Serum**. Add a few drops to any massage product to bring it back to life toward the end of a long treatment. **800.762.6245, cuccio.com**



Guide teenage clients through the breakout cycle with **SpaTeen Blemished Skin Toner** from Pevonia Botanica. Kava root and hamamelis bark extracts ensure that skin is calmed while salicylic and lactic acids strip away debris. **800.PEVONIA, pevoniacom.com**



Revercel PM is packed with antioxidants and peptides to restore dermal elasticity while clients sleep. The moisturizing formula works to reduce fine lines and wrinkles, and also promotes clarity and brightness. **866.TO.RENEW, revercel.com**



The **Pearl Treatment Masque** from Yum Gourmet Skincare includes micronized mother-of-pearl and silk amino acids for nourishment, while collagen and hyaluronic acid help defy the signs of aging. **877.YUM.LINE, yumskincare.com**

Athena Cosmetics **RevitaLash** is a vitamin-rich, clear liquid eyeliner. When applied once a day to the base of the eyelashes, it helps them grow longer, thicker and fuller. **877.909.LASH, revitalash.com**

